

# Pro Landscaper

Concept to Delivery

October 2011

DEDICATED TO  
THE LANDSCAPE  
INDUSTRY



Let's hear it from...  
Landscape Group CEO  
Nick Temple-Heald



## Portfolio

See how three companies  
have designed and  
implemented their projects



[www.green-tech.co.uk](http://www.green-tech.co.uk)

Green-tech competition  
Your chance to win a  
Cooper Pegler sprayer



Published by **e|jays44**  
Business Intelligence

## THOMPSON LANDSCAPES' SERENE SPACE

A safe environment full of colour and interest for  
elderly dementia patients within a care development



Fisher Tomlins' seamless garden design and landscaping is uniquely placed to offer a fully integrated service with inspirational garden ideas. Shown here is a country garden in Petts Wood with new terraces, planting, woodland and play areas.

# SEAMLESS DESIGN FOR A COUNTRY GARDEN

## ABOUT FISHER TOMLIN



Fisher Tomlin aim to give a seamless service from design through to completion and maintenance. Their clients go to them by recommendation and what they all have in common is that they want a great garden or landscape that works for their lifestyle. The connection that their gardens make with plants, nature and particularly the needs of the garden owners is an essential part of their design ethos.

All their projects are led by either Andrew Fisher Tomlin founder (pictured) or Dan Bowyer with the support of specialist gardeners, construction professionals and horticultural experts.

Andrew Fisher Tomlin is a Director of Fisher Tomlin and has developed a large portfolio of work since founding the company in 1989. His experience includes public spaces as well as residential gardens both as a designer and horticultural consultant. Andrew is also a Director of the London College of Garden Design, a Fellow of the Society of Garden Designers and a trustee of Thrive - the national charity for horticultural therapy.

Dan Bowyer is a Director of Fisher Tomlin and he is responsible for a wide range of design projects from private residential gardens through to public spaces both in the UK and overseas. He is particularly interested in contemporary spaces for city living and his work has featured in a number of publications.

As well as their traditional areas of expertise creating residential gardens they are also able to advise on the creation of public spaces including design and horticultural consultancy. In recent years they have worked on large heritage projects and new landscapes such as Charlton House for the London Borough of Greenwich and the London 2012 Athletes Village. [www.fishertomlin.com](http://www.fishertomlin.com)





The garden is located in Pett's Wood in Kent and is fortunate to include part of Pett's Wood which is an historic ancient woodland. Half the garden includes oak and other trees dating back more than 300 years and these were to be preserved and enhanced with further tree planting and woodland groundcover:

The key development – and where most of the budget was to be spent – was next to the house where successive owners had laid different levels of concrete paving. The brief here was to substantially sort these levels out creating two new levels for entertaining, leveling the lawn and incorporating simple water features, storage and a new kitchen garden.

#### DEVELOPMENT TIMING

- Design – Summer 2009
- Start construction – Winter 2009/10
- Pause for construction of side extension to house – Late winter 2010
- Final phase and completion – Spring 2011

#### APPROXIMATE COSTINGS

- Construction costs
  - Clearance and waste removal – £17,000
  - Retaining walls – £80,000
  - Surfaces – £70,000
  - Garden buildings – £20,000
  - Lighting – £15,000
- Soft landscaping
  - Plants and planting – £10,000
  - Lawn – £10,000

#### THE KEY PROJECT ELEMENTS INCLUDED:

- Improving circulation around the garden, keeping the sense of space there is and creating new levels for entertaining, seating etc.
- Creating a new entrance from the house into the garden and looking at the areas around the house, particularly to the side and where the glasshouse is currently located to create a new kitchen garden
- Retaining a large lawn but leveling it to take a marquee in the future.
- Giving more planting interest including year round colour and enhancing the existing woodland.

#### SOURCING MATERIALS FOR THE JOB

- Bricks were selected to work with the colour of the existing red brick on site.
- The paving was Deep Lane Yorks stone,
- Summerhouse and greenhouse were custom made by English Garden Joinery
- Plants supplied by Johnsons of Whixley and Palmstead

#### ● Drainage

As soon as we started to excavate for walls we quickly realised that the main part of the garden was on a bed of sand up to 2.5m deep (see image). However the lowest level where the kitchen garden was to be located had a water table just inches below the surface. With the garden draining quickly through the sand this lowest level was almost acting as a sump before draining downhill beyond the garden's boundaries. We therefore quickly abandoned an initial idea for surface level vegetable beds and raised them. Drainage was also resolved and incorporated pumps in cases of excess water levels.

#### ● Retaining walls

Existing retaining walls on the higher lawn level were restored rather than re-built which gave some challenges in matching brick type and required a high level of expertise to prevent over-restoration.







## REFERENCES

*Designers:*

**Fisher Tomlin**

8 Chertsey Road, Chobham, Surrey GU24 8NB

Tel: 01276 855900

Email: info@fishertomlin.com

Web: www.fishertomlin.com

*Main contractor:*

**Landform Consultants**

The Nursery, Bagshot Road, Chobham, Surrey GU24 8DB

Tel: 01276 856145

Email: mark@landformconsultants.co.uk

Web: www.landformconsultants.co.uk

*Buildings:*

**English Garden Joinery**

8 Chertsey Road, Chobham, Surrey GU24 8NB

Tel: 01276 855955

Email: info@englishgardenjoinery.co.uk

Web: www.englishgardenjoinery.co.uk

*Nurseries:*

**Johnsons of Whitley**

Gilthwaite Lane, Whitley, York YO26 8AQ

Tel: 01423 330234

Web: www.nurserymen.co.uk

**Palmstead Nurseries Limited**

Harville Road, Wye, Ashford, Kent TN25 5EU

Tel: 01233 813340

Email: sales@palmstead.co.uk

Web: www.palmstead.co.uk



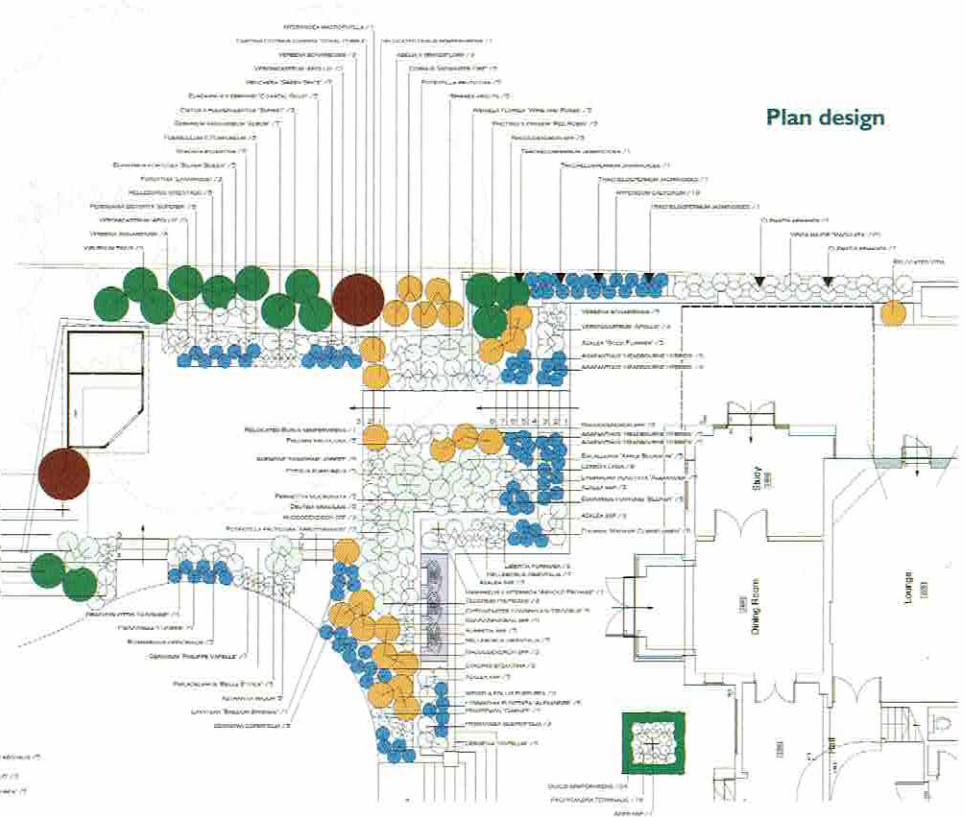
With over 20 years experience our portfolio includes traditional country gardens in Surrey, Sussex, Buckinghamshire and further afield; contemporary London gardens, roof gardens and kitchen gardens from our new Chobham gardens showroom in Surrey and our Wimbledon garden office in London.

**Andrew Fisher Tomlin Garden Designers**

[info@andrewfishertomlin.com](mailto:info@andrewfishertomlin.com)

● Access

Access for large vehicles was limited so from the start we decided to knock down an old wall to the right of the house and re-build after construction.



Plan design